

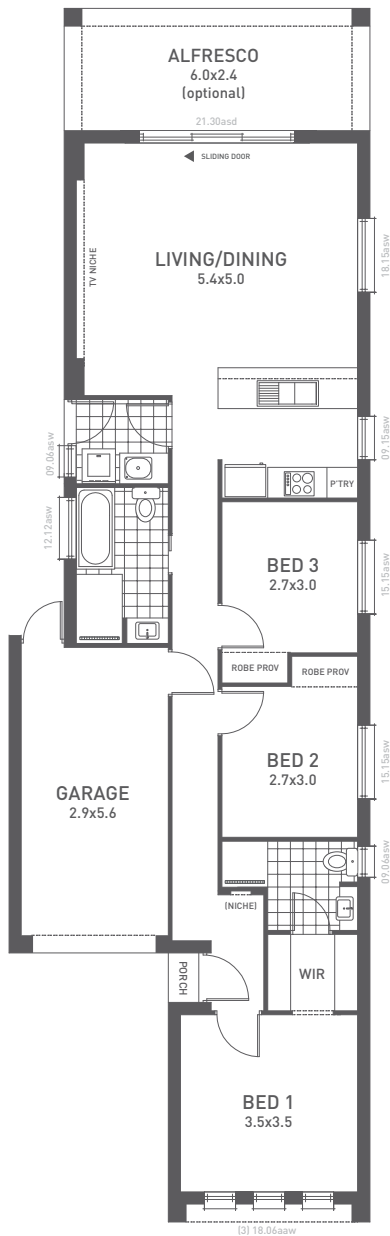


# HOME DESIGN THIRTEEN






BED BATH CAR  
**3 2 1**

TOTAL SQUARES **12.70**

◀▶ min block width **8m+**



Despite its narrow design this home refuses to compromise on space and functionality. The indoor/outdoor social area at the rear of the home makes it perfect for every day family living or entertaining.

-  **3 Bedrooms**
-  **2 Bathrooms**
-  **Single car garage**
-  **Outdoor living space**
-  **Development suited**

**Weeks & Macklin Homes**

## THE SPECS

LIVING  
**98.52**

GARAGE  
**18.95**

PORCH  
**0.58**

TOTAL  
**118.05**

ALFRESCO OPT.  
**14.38**

WIDTH  
**7.07M**

LENGTH  
**23.78M**