

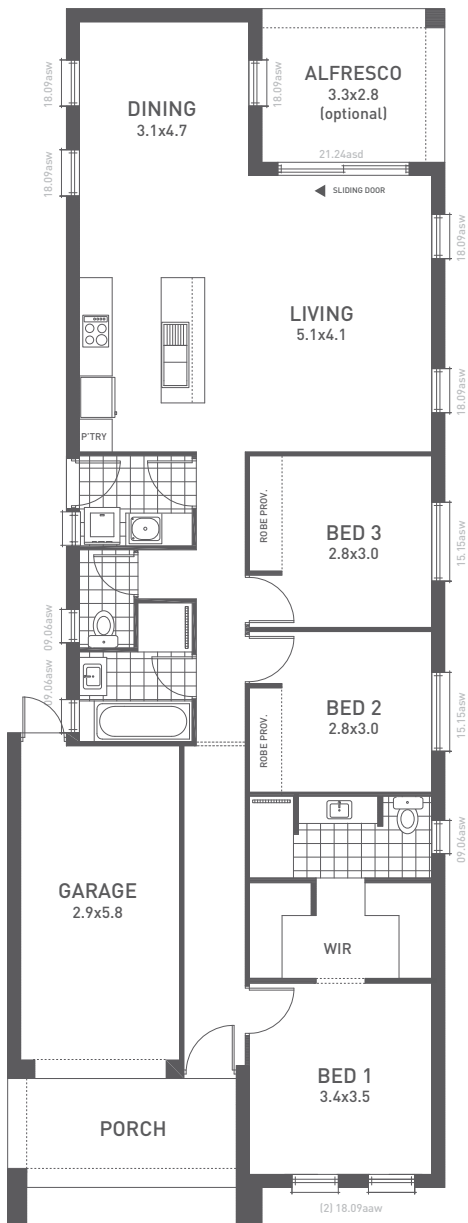


# HOME DESIGN NINETEEN






BED BATH CAR  
**3 2 1**

TOTAL SQUARES **15.52**

◀▶ min block width **9m+**



This is the ideal home for a family. Whilst simplistic in design it has everything a family needs, complete with 3 bedrooms, two bathrooms and a spacious open living area.

-  **3 Bedrooms**
-  **2 Bathrooms**
-  **Single car garage**
-  **Outdoor living space**
-  **Development suited**

**Weeks & Macklin Homes**

## THE SPECS

LIVING **116.25**

GARAGE **19.60**

PORCH **8.40**

TOTAL **144.25**

ALFRESCO OPT. **13.12**

WIDTH **8.03M**

LENGTH **22.37M**