

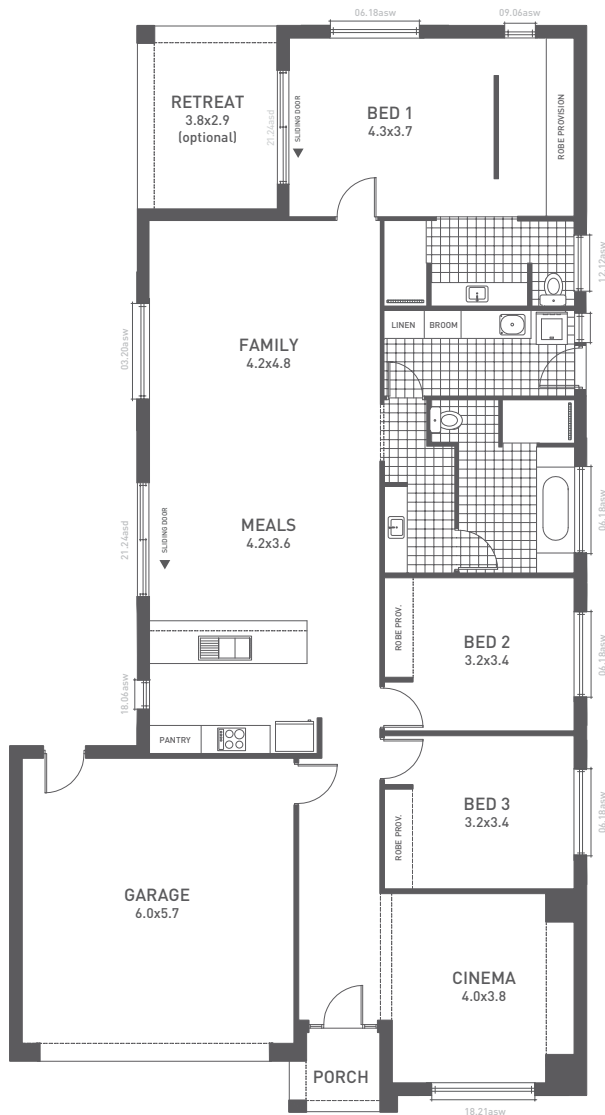


HOME DESIGN FOURTEEN







BED BATH CAR
3 2 2

TOTAL SQUARES **23.12**

◀ ▶ min block width **12.9m+**



This home features a successful mix of public areas and cleverly designed private spaces. The beautiful hotel inspired master bedroom complete with private retreat is perfect for those precious moments alone.

-  **3 Bedrooms**
-  **2 Bathrooms**
-  **double car garage**
-  **Home cinema**
-  **Outdoor living space**
-  **Spacious laundry**

Weeks & Macklin Homes

THE SPECS

LIVING
173.67

GARAGE
38.05

PORCH
3.10

TOTAL
214.82

ALFRESCO OPT.
11.28

WIDTH
11.88M

LENGTH
22.79M